



GLOBAL HOUSING TECHNOLOGY CHALLENGE INDIA



02.03.2019

A PARADIGM SHIFT IN THE CONSTRUCTION SECTOR

GHTC-India aims to identify innovative proven construction technologies from across the globe which are Sustainable, Green, Rapid and Disaster Resistant.



LIGHT HOUSE PROJECT RAJKOT, GUJARAT

1144 Houses

Technology

Monolithic Concrete Construction using Tunnel Formwork

Construction Process



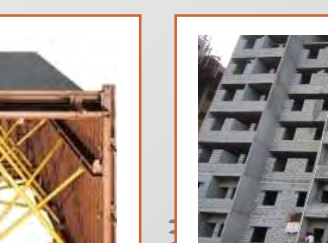
1 Customised Tunnel Formwork (mould) of steel manufactured in the factory



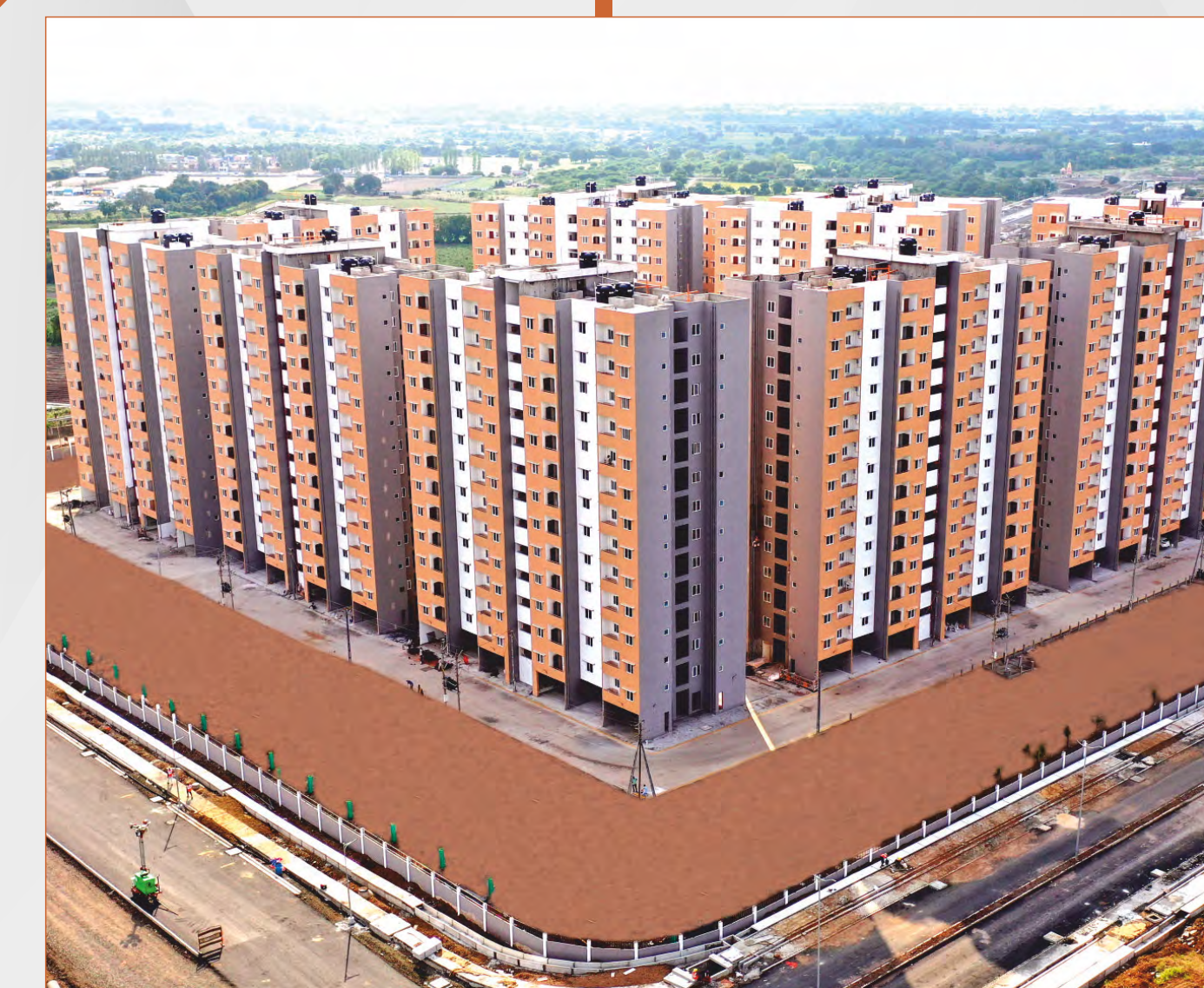
2 Placement of Tunnel formwork in already erected reinforcement cage for walls at site



3 Placement of slab reinforcement & concreting of walls & slabs together in one go along with services (electricity, plumbing)



4 Infill walls constructed using Autoclaved Aerated Concrete (AAC) Block followed by plastering



Project completed in 15 months



Inaugurated by Hon'ble Prime Minister on 19th October 2022



LIGHT HOUSE PROJECT CHENNAI, TAMIL NADU

1152 Houses

Technology

Precast Concrete Construction System - Precast Components Assembled at Site

Construction Process



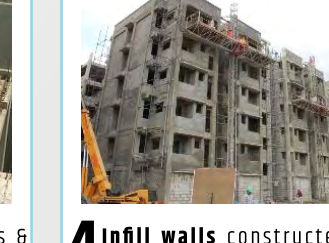
1 Manufacturing of pre-cast building components (columns & beams, slabs, stairs etc.) in casting yard



2 Transportation & Erection of Pre-cast beams & columns at site



3 Placement of pre-cast slabs & Assembly through in-situ concreting (wet pointing) with beam and columns



4 Infill walls constructed using Autoclaved Aerated Concrete (AAC) Block masonry along with services (electricity, plumbing) followed by plastering



Inaugurated by Hon'ble Prime Minister in May 2022
Project completed in 12 months



LIGHT HOUSE PROJECT INDORE, MADHYA PRADESH

1024 Houses

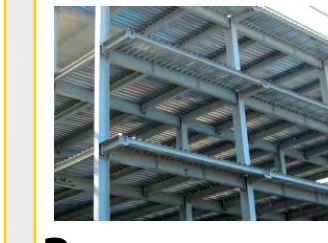
Technology

Prefabricated Sandwich Panel System with Pre-Engineered Steel Structural System

Construction Process



1 Customised steel columns & beams manufactured in the factory are erected at site



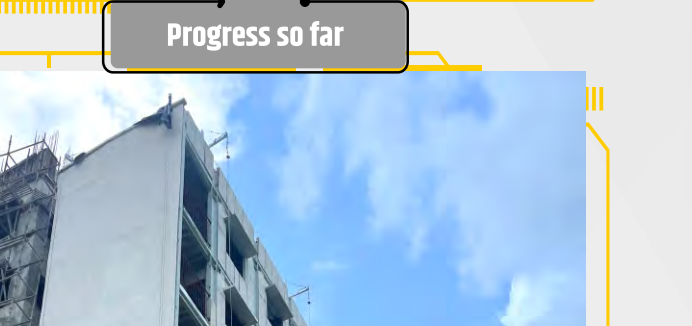
2 Deck slab installation in already erected steel structure



3 Concreting of deck slabs with reinforcement along with services



4 Factory made Prefabricated sandwich panels are installed as infill walls along with services



Progress so far



Scan and enrol:
TECHNOGRAM



LIGHT HOUSE PROJECT LUCKNOW, UTTAR PRADESH

1040 Houses

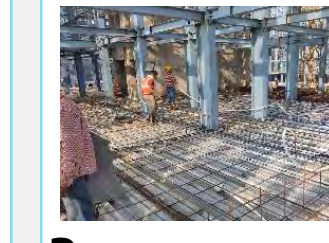
Technology

Stay in Place PVC Formwork with Pre-Engineered Steel Structural System

Construction Process



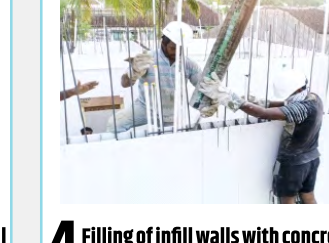
1 Customised steel columns & beams manufactured in the factory are erected at site



2 Deck slab installation in already erected steel structure & Concreting with services



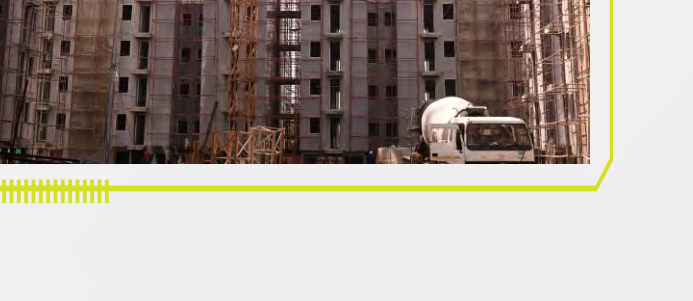
3 Factory made prefabricated PVC Wall forms are installed as infill walls along with services



4 Filling of infill walls with concrete



Progress so far



LIGHT HOUSE PROJECT RANCHI, JHARKHAND

1008 Houses

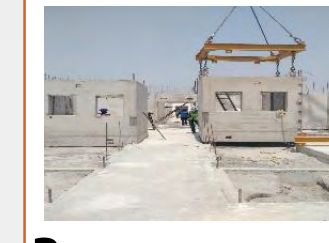
Technology

Precast Concrete Construction System - 3D Volumetric

Construction Process



1 Casting of structural modules & slabs in the casting yard



2 Placement of modules at site using cranes



3 Placement of pre-cast floors on already erected structured modules



4 Step 2 & 3 are repeated like Lego Blocks to complete a Tower



Progress so far



LIGHT HOUSE PROJECT AGARTALA, TRIPURA

1000 Houses

Technology

Light Gauge Steel Framed (LGSF) System with Pre-engineered Steel Structural System

Construction Process



1 Customised steel columns & beams manufactured in the factory are erected at site



2 Erection of factory made LGSF panels and Filling of Precast concrete panels for walling



3 Filling of light weight concrete between the wall panels



4 Deck slab installation in already erected steel structure & Concreting with services



Progress so far

