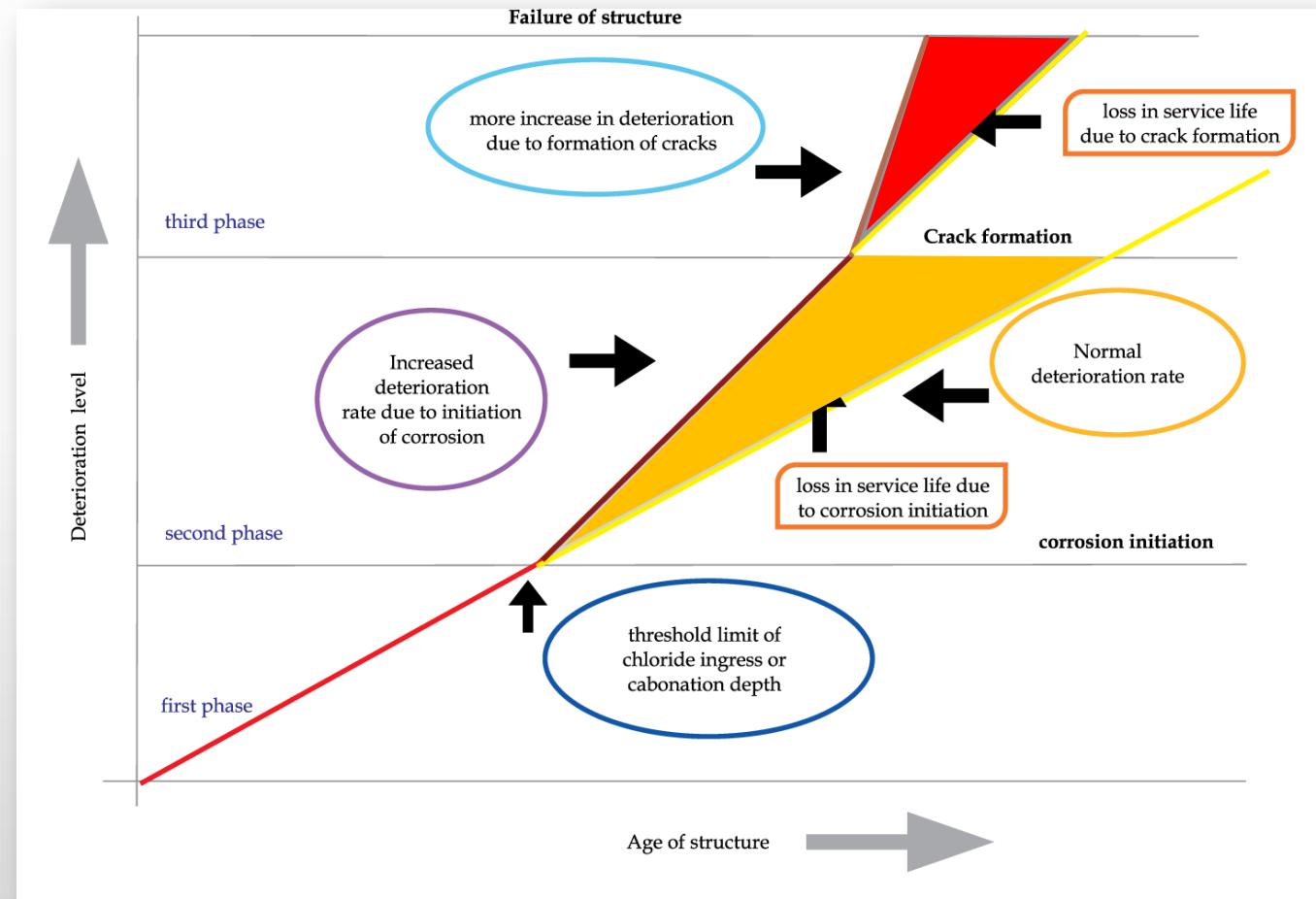


***FORMATION OF CHLORIDE IN
THE CONSTRUCTION INDUSTRY***

- Chloride ion (Cl⁻) formed from chlorine gaining an electron or dissolved hydrogen chloride in water.
- High chloride ion concentrations in concrete problematic.
- Chloride ions electro-chemically break down passive steel layer, no need to lower pH levels.
- Corrosion occurs, leading to concrete cracking, spalling, and failure.



XYLO PAINTS decided to understand the cause and effect in line with the IIT-D findings and offer a sustainable solution in line with our CORE OBJECTIVE OF “**FIRST TIME RIGHT**” SOLUTION by understanding the



CAUSE



Use of chloride-containing materials such as aggregates, cement, admixtures, and GROUND/SALTY/ UNTREATED / CONTAMINATED water.

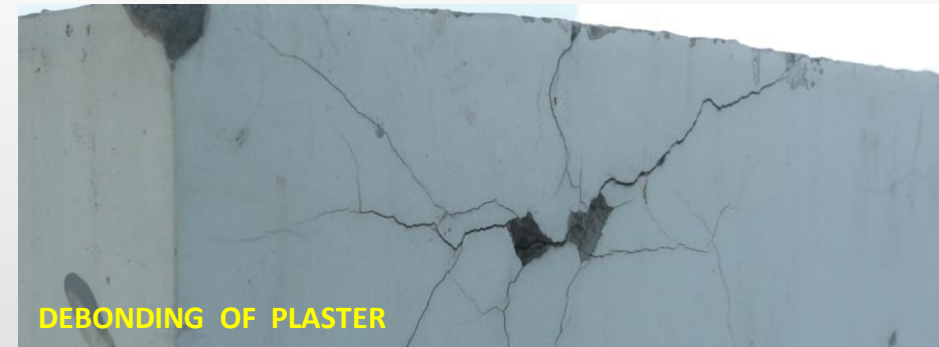


WATER IMPREGNATION IN THE SURFACE WHICH PROPOGATES THE REACTION TO FORM CHLORIDES



INGRESS OF WATER Accelerates the deterioration

EFFECT



CHALLENGES



Plastering doesn't guarantee reoccurrence

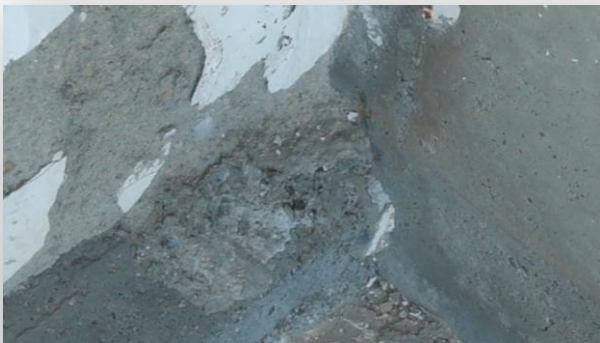
Disposal is difficult after removal of plaster



Time Consuming and Expensive

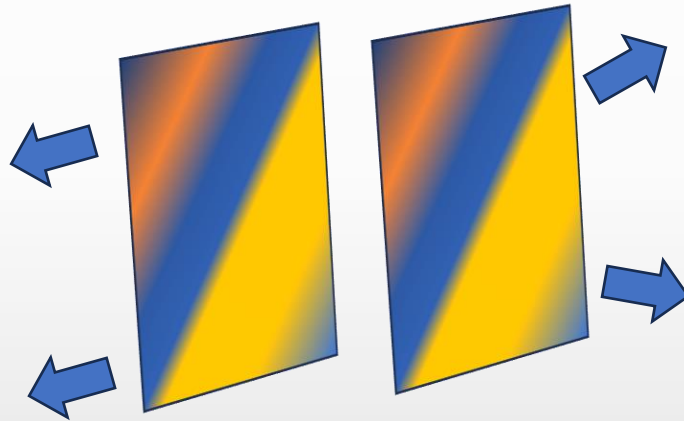
Too many cracks- major and minor

Base is very weak



SOLUTION

FILM FORMATION TECHNOLOGY



FLEXIBLE & HOMOGENEOUS

The primary purpose of film formation is to create a continuous, flexible, and impermeable layer over a substrate to bridge and seal existing cracks or prevent the formation of new ones.



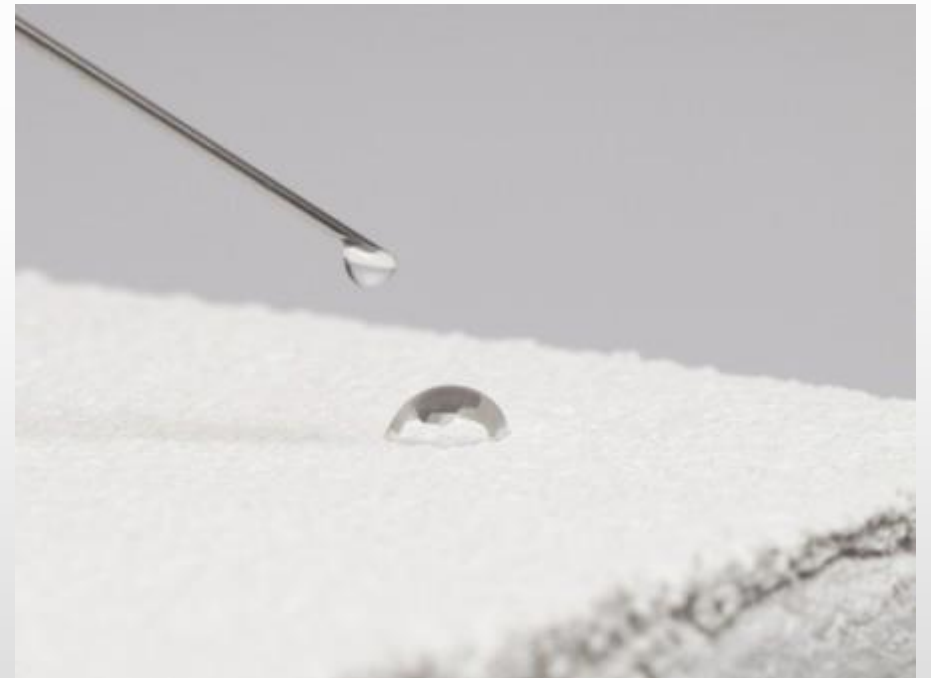
SOLUTION

FILM FORMATION TECHNOLOGY



HYDROPHOBIC FILM FORMATION

Hydrophobic film formation is a versatile and valuable technique with wide-ranging applications, providing significant benefits in terms of water repellency, moisture resistance, and material protection.



www.xylopaints.com

New Delhi | Haryana | Maharashtra | Tamil Nadu | Karnataka | Kerala



SOLUTION

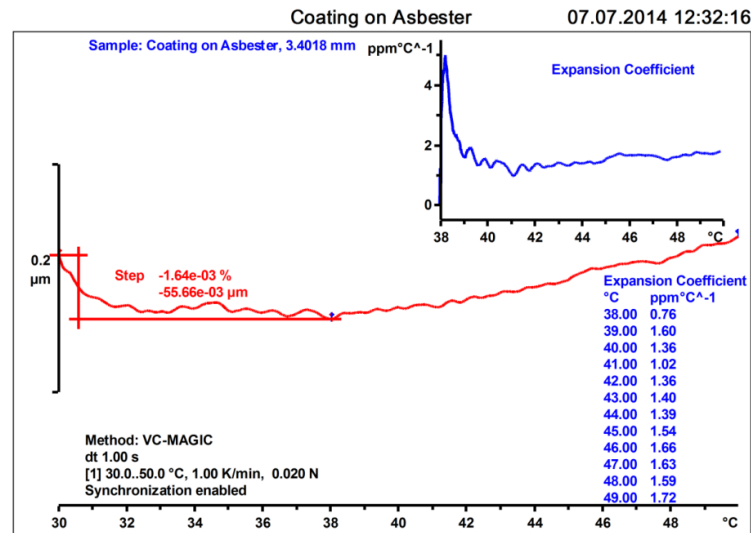
INDENTATION RESISTANT MATERIAL



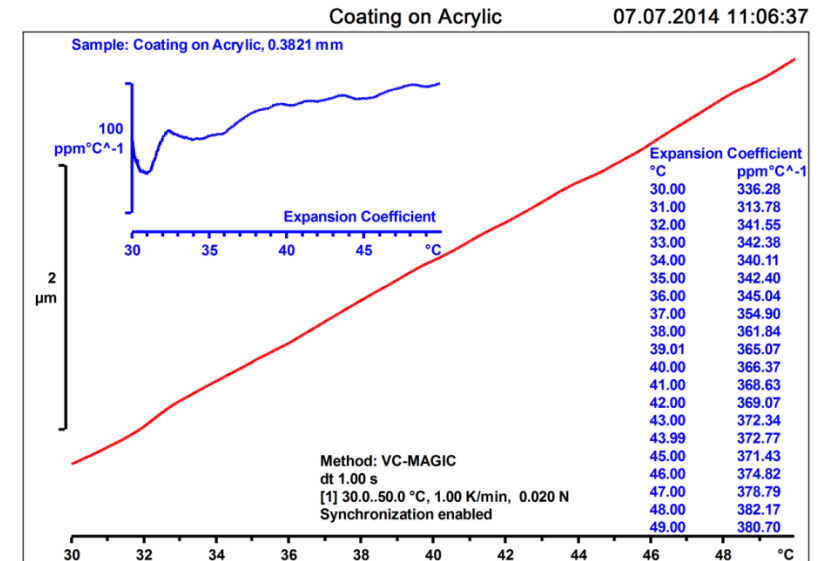
The material is characterized by high hardness, strength, and toughness, which enable it to maintain its shape and structural integrity even under significant applied pressures. Indentation resistance is an important property in various applications to ensure the longevity and durability of components and structures.

SOLUTION

ELASTOMERIC FILM FORMATION



DEMO Version STAR[®] SW 12.10
Figure 3:- TMA CTE analysis of Elastomeric Coating (Asbestos)



DEMO Version STAR[®] SW 12.10
Figure No 2. TMA and CTE curves of elastomeric coating on acrylic sheet.

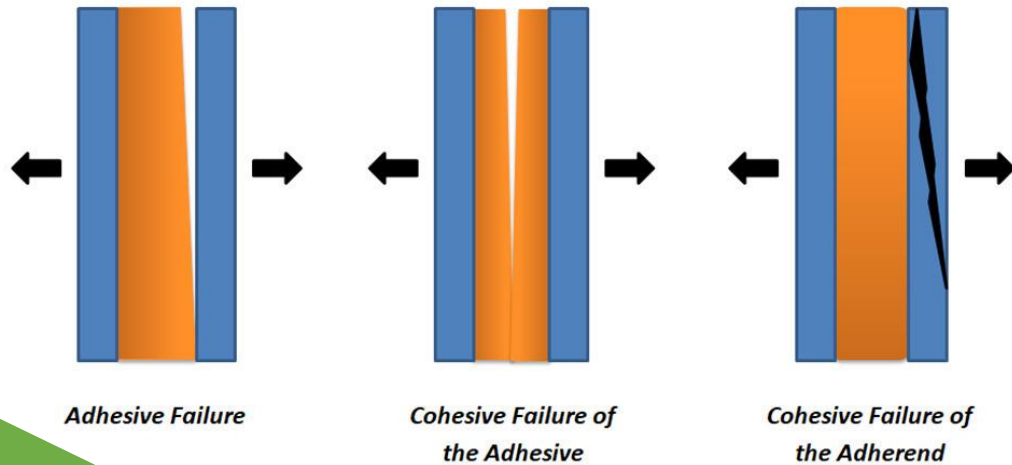
In applications where the elastomeric film will experience significant temperature fluctuations, its ability to withstand thermal cycling is crucial. The film should retain its properties without undergoing degradation or fatigue.



SOLUTION

EXCELLENT ADHESION

time.



- **Benefits of Excellent Adhesion in Construction:**
- **Strong Bonds:** Enhances structural integrity and reliability.
- **Waterproofing and Weatherproofing:** Prevents moisture damage and environmental impacts.
- **Crack Bridging:** Maintains continuity and prevents further damage.
- **Flexibility:** Accommodates movements without failure.
- **Aesthetics:** Ensures visually appealing and durable finishes.
- **Load Transfer:** Efficiently distributes forces between elements.
- **Seismic Resistance:** Enhances connections during seismic events.
- **Energy Efficiency:** Reduces heat loss and air leakage for better insulation.
- **Structural Repair:** Facilitates durable bonding in restoration projects

SOLUTION



A rust inhibitor film coating is a type of protective coating applied to metal surfaces to prevent or slow down the corrosion process caused by rust

Characteristics

- Converts Rust Into Stable Iron
- Stops Oxidation Process
- Strong Chemical Bonding
- No Need for Strong Base Preparation

SOLUTION AS A CORRECTIVE MEASURE



XYLO PAINTS BELIEVES IN DOING IT “FIRST TIME RIGHT” AND SUGGESTS YOU TO USE XYLO’S INNOVATIVE PRODUCTS TO USE IT AS A PREVENTIVE MEASURE WHICH WILL SAVE ON THE HUGE COST OF REPAIRING AND RETAINING YOUR BRAND EQUITY.

Rusto



Rusto Rust Inhibitive Primer

Rusto converts rust into stable iron thereby arresting the oxidation process and improving the life of the paint applied on top

BASE MATERIAL: Solvent Based



PRODUCT BENEFITS

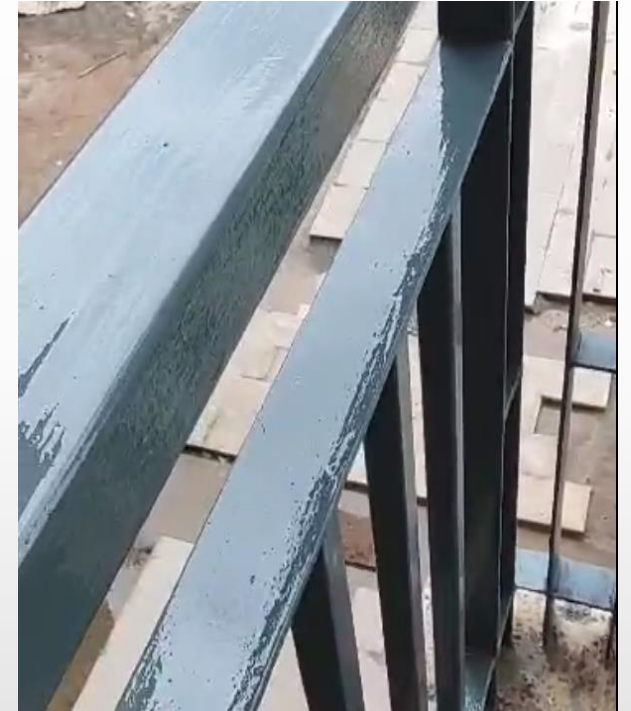
 **CONVERTS RUST INTO STABLE IRON**

 **HAS A STRONG CHEMICAL BOND**

 **STOPS THE OXIDATION PROCESS**

 **CLEARs MORE THAN 350 HOURS OF SALT SPRAY TEST**

NO NEED FOR STRONG BASE PREPARATION



www.xylopaints.com

New Delhi | Haryana | Maharashtra | Tamil Nadu | Karnataka | Kerala



P-Laster



P-LASTER BASE MATERIAL: Water Based

Coarse Polymerized Mortar EXTERIOR GRADE

It is a **ready to use**, elastomeric paintable plaster, for loading on RCC, AAC block work & repairing of plaster to a **minimum thickness of 5-6 mm in 1 go**.

P-LASTER PRODUCT BENEFITS



Water repellent



Available in Colors



Excellent adhesion



Magic Xp



MAGIC XP Elastomeric Paintable Plaster

Xylo paints - Magic Xp is an elastomeric paintable plaster/putty that is crack and leak free, hydrophobic, exterior grade self curing material available as a ready to use paste.



BASE MATERIAL: Water Based

PRODUCT BENEFITS

TOUGH AND DURABLE

MAGIC XP CAN BE LOADED WITH A ROLLER AND SWIPED WITH A TROWEL BLADE



Indentation Resistant



Anti-Fungal



Hydrophobic



Elastomeric



Eco-Friendly



Available in Colors

ELIMINATES ALL TYPES OF CRACKS

MAGIC XP CAN BE USED AS A LEVELLING AGENT TO A THICKNESS OF 0.5 MM TO 25 MM



www.xylopaints.com

New Delhi | Haryana | Maharashtra | Tamil Nadu | Karnataka | Kerala



Leak Proof Series



LPPO

LPPO (Leak Proof Part One) is in a **liquid format**. It impregnates into the pores and seals it completely. This can be brush applied and the maximum thickness derived is around 55 - 60 microns.

A water proofing compound for finer voids.



LPPT

LPPT (Leak Proof Part Two) is in a **paste format**. This is used to fill bigger voids and to make the surface abrasion resistant. Must be used along with nylon membrane/mesh as a reinforcing agent.

A water proofing compound for deeper voids.



PRODUCT BENEFITS



Anti-Fungal



Water Resistant



Indentation Resistant



Exterior Grade



Tough & Durable



Color Fast

www.xylopaints.com

New Delhi | Haryana | Maharashtra | Tamil Nadu | Karnataka | Kerala



Weather Touch Series



Top coat all the facades with WEATHER TOUCH – Anti-fungal emulsion to decorate the area and create a compatible film


WEATHER TOUCH - Luxury Exterior Emulsion

- Fungus and Algae Resistant.
- Excellent Water Resistance.
- Excellent Scrub Resistance.
- Excellent washability.
- Excellent Static Properties. No Dust Retention.
- Low VOC and lead free.



“ OUR QUALITY POLICY IS PERIODICALLY REVIEWED FOR ESTABLISHING HIGHER QUALITY OBJECTIVES WITH GROWTH AND DEVELOPMENT OF BUSINESS. ”

THANK YOU

 Xylo paints Pvt Ltd , 786, Aggarwal Cyber Plaza 2 ,
Netaji Subhash Place, Wazirpur, New Delhi –
110034

 +91-9810156132

 xylo@xylopaints.com

www.xylopaints.com

New Delhi | Haryana | Maharashtra | Tamil Nadu | Karnataka | Kerala

